

## Explanation:

- The picture shows a standard situation which you will find in approx. 80% of all bars, restaurants and hotels in east and west Europe.
- You find a main water tap **1** and an undertap **2** with an additional 3/8" thread **3**.
- Standard SPÜLBOY<sup>®</sup> units are delivered with hose and 3/8" thread connection **4**. For this installation you do not need any further adapter.



## Explanation:

- You can connect SPÜLBOY<sup>®</sup> with the main water outlet **1** via perlator reduction **2**. 80% of the bars, restaurants and hotels have the same tap outlet with a 22/1" thread.
- To connect SPÜLBOY<sup>®</sup> you just need to follow the pictures 1-3. SPÜLBOY<sup>®</sup> is connectable with it's standard connection hose (see picture 3).

## PICTURE 1



**PICTURE 2**

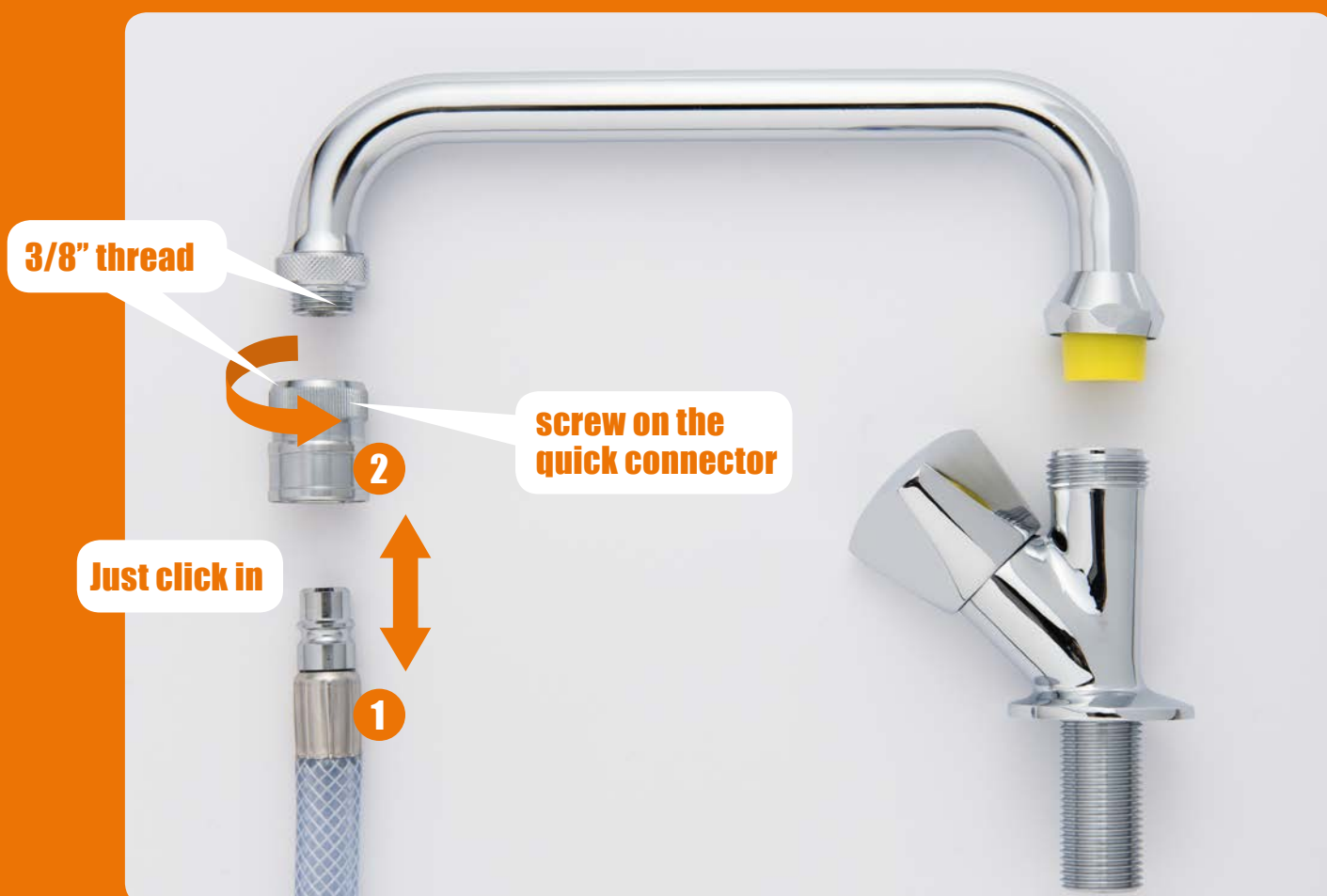


**PICTURE 3**



## Explanation:

- First you install the perlator reduction to the tap (see sheet II, picture 1+2).
- The quick connection has a 3/8" thread which is suitable to the perlator.
- The hose needs a special preparation for fitting to the quick connector! If you order Spülboy<sup>®</sup> including quick connection we fit up the hose with a suitable connection tail **1**.
- By pushing up or down the ring it is easy to connect and disconnect the hose from the water outlet **2**.
- This is highly useful for a daily cleaning and recommended to fulfill highest hygienic standards.



### Explanation:

- In case you do not have an under tap (sheet I) and if you do not want to connect SPÜLBOY® at the main water outlet either (sheet II or III) you can install a water converter **1** with 1/2" thread **2** in between the tap outlet and the tap body.
- The converter needs to be installed between the upper water outlet and the tap body.
- In this case we equip SPÜLBOY® with a connection hose fit up by 1/2" thread **2** to connect it smoothly to the converter **1**.

